



مجموعة الراجحي القابضة
AL RAJHI GROUP HOLDING COMPANY

Prefabricated Houses

THE AFFORDABLE SOLUTIONS FOR YOUR DREAM HOUSE

WE HAVE BEEN SERVING YOU PROUDLY SINCE 2005



Advantages of prefabricated houses



01

Healthy

Healthy and close to nature

02

Economic

You can have a prefabricated house for a much lower cost than traditional homes

03

Resistant

Earthquake proof and insulation against harsh weather factors

04

Simple

Ease of assembling these houses and designing them as you like



فئات بيوت المسبقة الصنع

Categories of prefabricated houses

ECONOMIC CATEGORY PRESS PANELS الفئة الاقتصادية



STEEL CARCASS PANELS الهيكل المعدني القياسي



MODEREN BUILDINGS LIGHT STEEL الحديد المجلفن للتصاميم الحديثة



مجموعة الراجحي القابضة
AL RAJHI GROUP HOLDING COMPANY



مجموعة الراجحي القابضة
AL RAJHI GROUP HOLDING COMPANY

Steel Frame System
Classical, Modern & Luxury

فئة الهيكل المعدني
التقليدية والموديرن والفاخرة



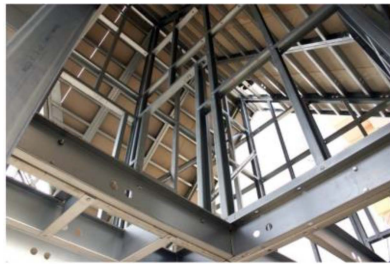
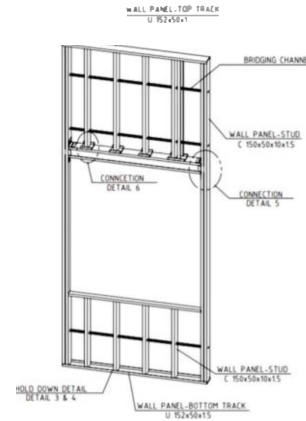
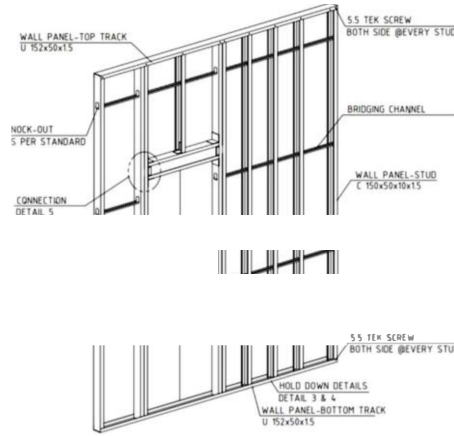
Light Steel Frame System



Light Steel Frame System نظام الهيكل المعدني الخفيف

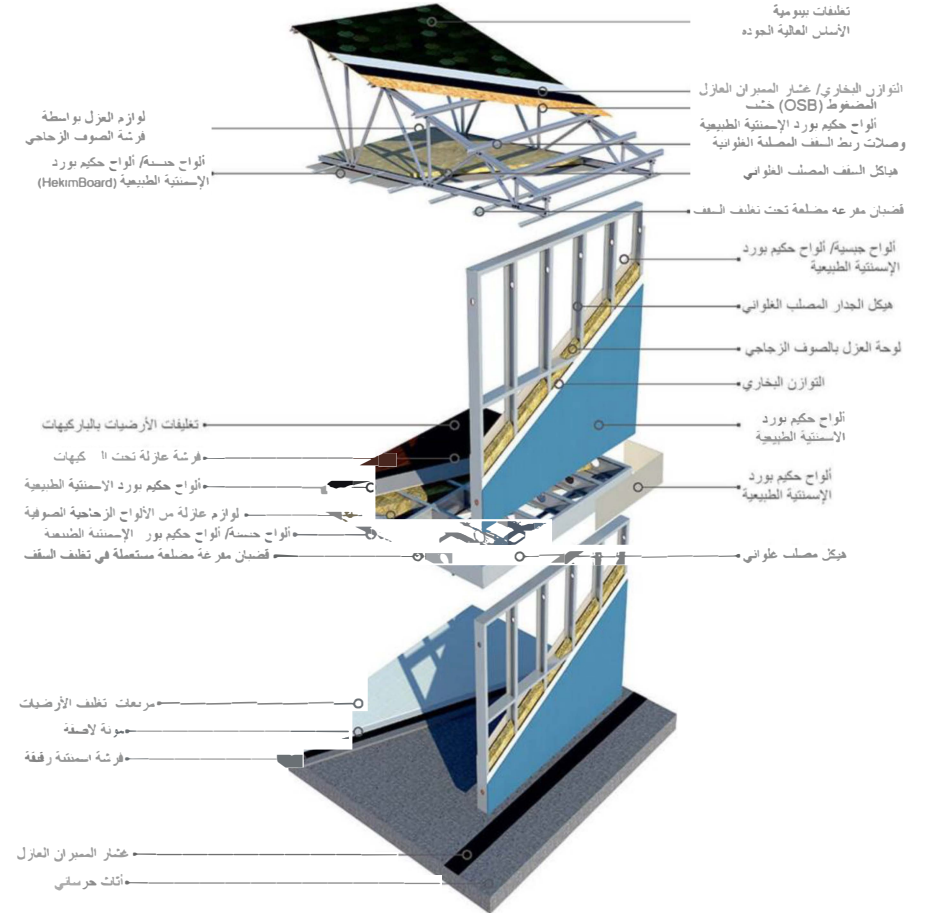
إطارات معدنية متينة فولاذية خفيفة الوزن تأتي على شكل اطارات وقنوات معدنية جاهزة من المصنع ملحومة بأعلى تقنيات التصنيع العالمية لتتم تركيبها وفق نظام سهل وقوي مدروس.

العرض: 125.5cm -62.5 cm -251cm
الارتفاع: 250cm -280cm -300cm-350cm
السماكة: 10-14 cm



Light Steel Frame System نظام الهيكل المعدني الخفيف

Technical Sheet المواصفات الفنية



Designs System **نظام التصميم**

يتم إجراء جميع العمليات الحسابية والهندسية من قبل قسمنا الفني باستخدام SAP 2000

Advanced

Autocad برامج الهيكلية و إصدار نظام التفاصيل ARCHICAD 9 TR و STRUCAD

أسس
التصاميم

1.4. Specifications Used In The static Analysis

AISC 360-10 LRFD Design
ASCE 7-16 (American Society of Civil Engineering)

1.5. Design Loads combinations

$$1.4 (D + F)$$

$$1.2D + 1.6(L_r \text{ or } R) + (L \text{ or } 0.5W)$$

$$1.2D + 1.0E + 1.0L + 0.2$$

$$0.9D + 1.0E + 1.6L$$

D Dead load

L Live load

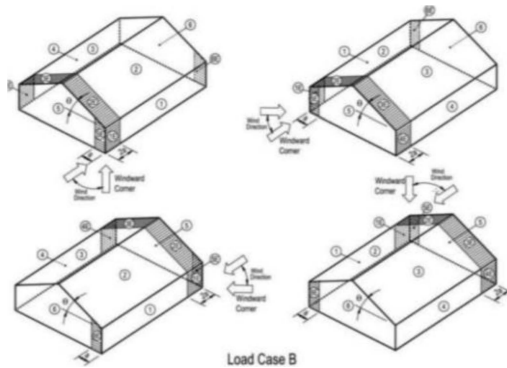
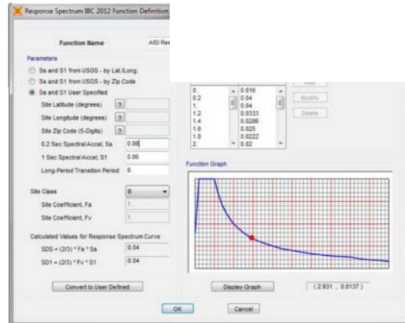
L_r Roof live load as determined in accordance with ASCE 7 [4] Section 4.9

Snow load as determined in accordance with ASCE 7 [4] Chapter 7

R Rain load as determined in accordance with ASCE 7 [4] Chapter 8

W Wind load

E = Earthquake load



General Material Specifications **مواصفات المواد العامة**

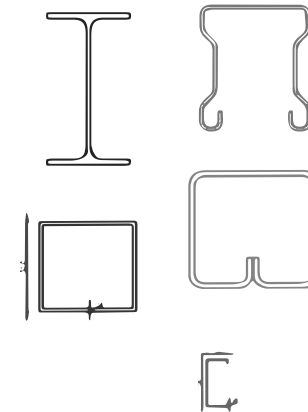
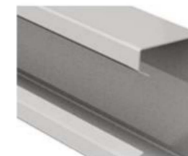
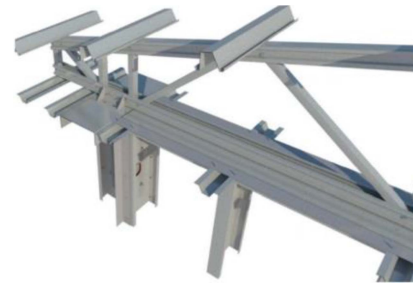
GENERAL MATERIAL SPECIFICATIONS

PANEL CARCASS , Quality S350GD+Z (~St 52), Erdemir Quality Nr. 1311-1335, standard DIN
ROOF TRUSS , EN 10147-00,
CHASSIS BETWEEN construction steel galvanized by covering zinc
FLOORS , ROOF PURLIN

CARCASS, TRUSS, CHASSIS PURLIN PRODUCTION SYSTEM TS EN 10162 standard, appropriate to JIT production system, galvanized C/U sectioned cold formed profile with STRUCTURE-ROBOT, 0,8-2 mm sheet thickness and 40-300 mm web width

COLUMN-BEAM Due to the **statics** and construction, St37-2 construction steel, **box profile** , **NPI** , **NPU** profile and Cold formed galvanized **C / U** sectioned material (Quality S350GD+Z)

PAINTED GALVANIZED METAL SHEET Painted Galvanized Metal Sheet: Coil coating system one side primer paint, other side primer galvanized metal sheet. Sheet other than roof trapezoid metal sheet is foiled with film



Exterior & Interior Walls جدران المبني

Technical Specifications & Standards المواصفات والمقاييس الفنية

TECHNICAL DATA

All statical calculations and design should be arranged due to the snow load, wind speed, earthquake zone, weather conditions of the location where the building is going to be installed

Standard Production Snow Load 40 Kg/m²
Conditions Snow Load (Altitude max.1000 m at 1st snow zone / Altitude max. 800 m at 2nd snow zone / Altitude max. 600 m at 3rd snow zone / Altitude max. 500 m at 4th snow zone)

Standard Production
Conditions Wind Speed 102 km/hour (50 kg/m²)

Standard Production Earthquake Effective ground acceleration coefficient: Ao = 0,40 (1st Degree
Conditions Earthquake earthquake zone)
Building importance coefficient (I =1)
Live Load joining coefficient (n = 0,3)
(due to the purpose and type of usage of the building,it is calculated like this; I =1 / 1,2 / 1,4 / 1,5 , n = 0,3 / 0,6)

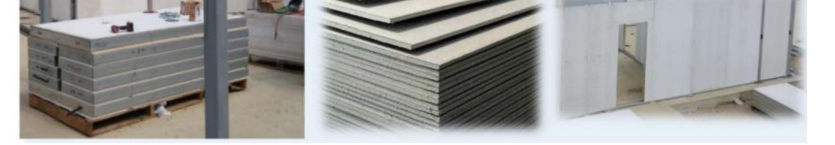
RELEVANT STANDARTS

DESIGN - STATICS	TS EN 1993-1-1 , 1-2, 1-8+AC, (EUROCODE 3) , TS 11372, TS 498 ,TS 648, TS 3357,TS 6793, TS EN 1991-1-1-3 , 1-1-4 (EUROCODE 1), TS EN 1998-1 (EUROCODE 8) , Regulation-2007 for Buildings to be installed at Earthquake Zone
CONNECTION ELEMENTS	Clinch bolt, galvanized bolt and nut DIN 933-960-961, DIN 935-F.8.8, TS 1021, TS 1020, TS 1026 , TS EN 20898
HEAT INSULATION	TS 825, Heat Insulation Regulation (08.05.2000)
SOUND INSULATION	TS 187 and TS 854 (DIN 4109)
FIRE RESISTANCE	TS 1263, DIN 4102, TS EN 13501-1 , Regulation-2002 for Buildings to be protected against Fire A1 Class Fire Resistance is certificated by Germanisher Lloyds according to NFPA 5000 American Standards.
ELECTRICAL SYSTEM	16.06.2004 dd and with the number 25494 Regulation of Electrical Inside System
SANITARY INSTALLATION	Regulations of Sanitary Installation

ويتألف الجدار من نظام قطاعات معدنية صلبة متينة خفيفة الوزن تغلف من الخارج والداخل بألواح من الاسمنت الليفي الطبيعي ماركة حكيم العالمية صنف Class A1 المضاد للحريق وبسبك نموذجي 8مم وتوجد لتلك الألواح أشكال متعددة من الناعمة السادة إلى خشبية المظهر او حجرية ويعبأ الفراغ بالصوف الصخري العازل .

عرض بلوك الجدار 251cm - 125.5 cm- 62.5 cm
ارتفاع : 2.5 m - 2.8 m- 3m -3.5m

أبعاد الجدران



العازل الحراري والصوتي ضمن الجدار الصوف الصخري 84 مم كثافة 50 kg/m³ يتميز بامتصاص ممتاز للصوت مناسب لتطبيقات النظام التي تتراوح من 50 إلى 55 ديسيبل. خفيفة الوزن وسهلة التركيب أطوال لفات طويلة للتركيب السريع والاقتصادي يتناسب الاحتكاك بين الأزرار . مما يضمن استمرارية الطبقة الماصة بدون فجوات هوائية



هيك ملعني ملعلفن على شكل C / U ملعلفن بسملكة 0.9-2 mm . يتوافق مع TS EN 10162 ونظم إنتاج IAT يتم توصيل الألواح ببعضها البعض عن طريق ٦ قطع ملعلفنة وصواميل نيمكليفن في المنتصف.

معامل التمدد الحراري (K: 0,54 W/m² K) K: 0.46 Kcal/m² hC



الطرف الداخلي للجدار الخارجي يكون عبارة عن طبقة أو طبقتين من الجبسبورد



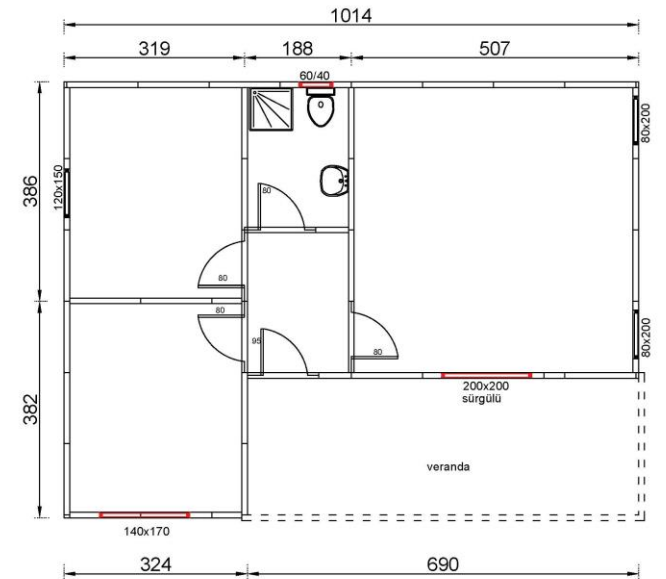
مجموعة الراجحي القابضة
AL RAJHI GROUP HOLDING COMPANY

Steel Frame System

Classical Models

فئة الهيكل المعدني
الموديلات التقليدية

Forest 82 m²



WM1 50 +15 m²



Class: Classical Model

WM1 50 +15 m²



Ground Floor



TOPLAM BRÜT ALAN
15.6 m²

Class: Classical Model



WM1 50 +15 m²



First Storey



Class: Classical Model



WM9 60 + 65 m²



Class: Classical Model



WM9 60 + 65 m²



First Storey

WM6 70 + 23 m²



Class: Classical Model



WM6 70 + 23 m²



First Storey



Ground Floor



VERANDA
Net 25.0 m²

TOPLAM BRÜT AL

WM10 60 + 65 m²



Class: Classical Model

WM10 60 + 65 m²



Class: Classical Model



WM10 60 + 65 m²



Ground Floor



First Storey



WM7 75 + 40 m²



Class: Classical Model

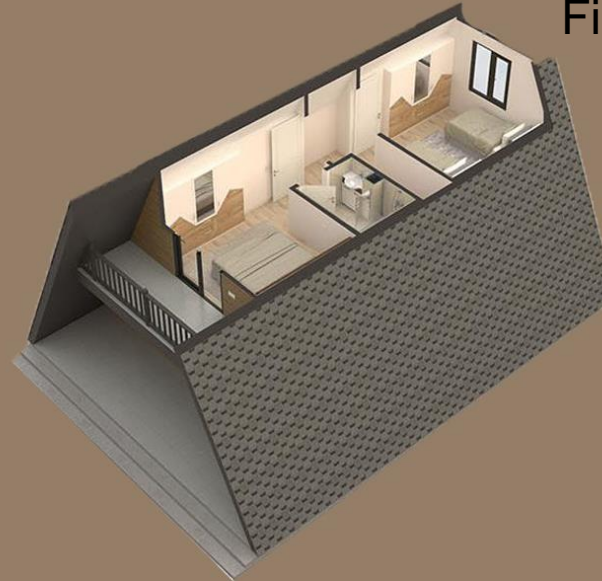
WM7 75 + 40 m²



Ground Floor



First Storey



WM4 88 + 47 m²



Class: Classical Model

WM4 88 + 47 m²



WM12 80 + 60 m²



Class: Classical Model



WM12 80 + 60 m²



Ground Floor



First Storey



WM3 95 + 20 + 34 m² Teras



Class: Classical Model



WM3 95 + 20 + 34 m² Teras



First Storey



Ground Floor

WM5 115 + 74m²



Class: Classical Model



WM5 115 + 74m²



Class: Classical Model



WM5 115 + 74 m²



Ground Floor



First Storey



WM 23 146 + 67 m²



Class: Classical Model



WM 23 146 + 67 m²



Class: Classical Model



WM 23 146 + 67 m²



WM 23 146 + 67 m²



WM 24 145 + 91 m²



Class: Classical Model

WM 24 145 + 91 m²



Class: Classical Model



WM 24 145 + 91 m²

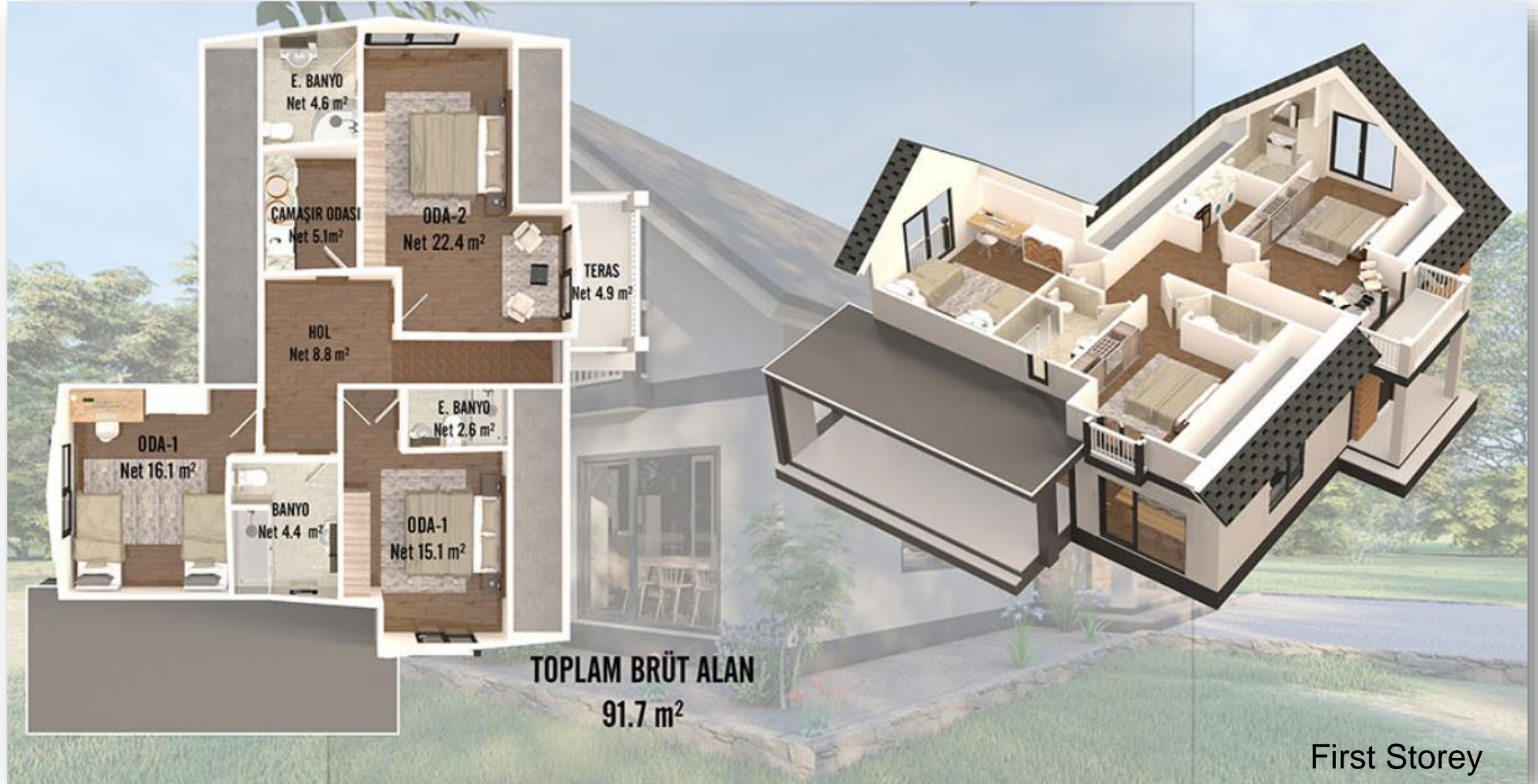


Ground Floor



TOPLAM BRÜT ALAN
145.5 m²

WM 24 145 + 91 m²



E. BANYO
Net 4.6 m²

ÇAMAŞIR ODASI
Net 5.1 m²

ODA-2
Net 22.4 m²

TERAS
Net 4.9 m²

HOL
Net 8.8 m²

E. BANYO
Net 2.6 m²

ODA-1
Net 16.1 m²

BANYO
Net 4.4 m²

ODA-1
Net 15.1 m²

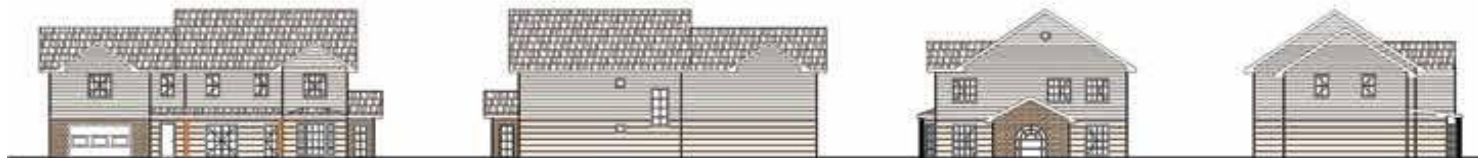
TOPLAM BRÜT ALAN
91.7 m²

First Storey

Ladin 352 m²



Class: Classical Model



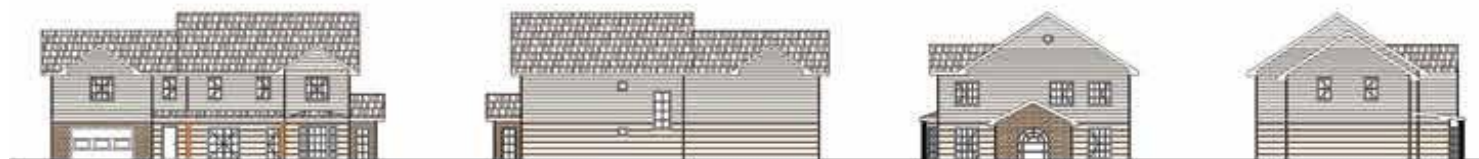
Ladin 352 m²



Ground Floor



First Storey





Steel Frame System

Modern Models

فئة الهيكل المعدني
الموديلات الحديثة (الموديرن)



Single Storey Modern Class

Hexi 117 m²



Class: Modern

Hexi 117 m²



Class: Modern

Hexi 117 m²



Class: Modern

Denai 120 m²



Class: Modern

Denai 120 m²



One Storey



Rock1 128 m²



Class: Modern

Rock1 128 m²

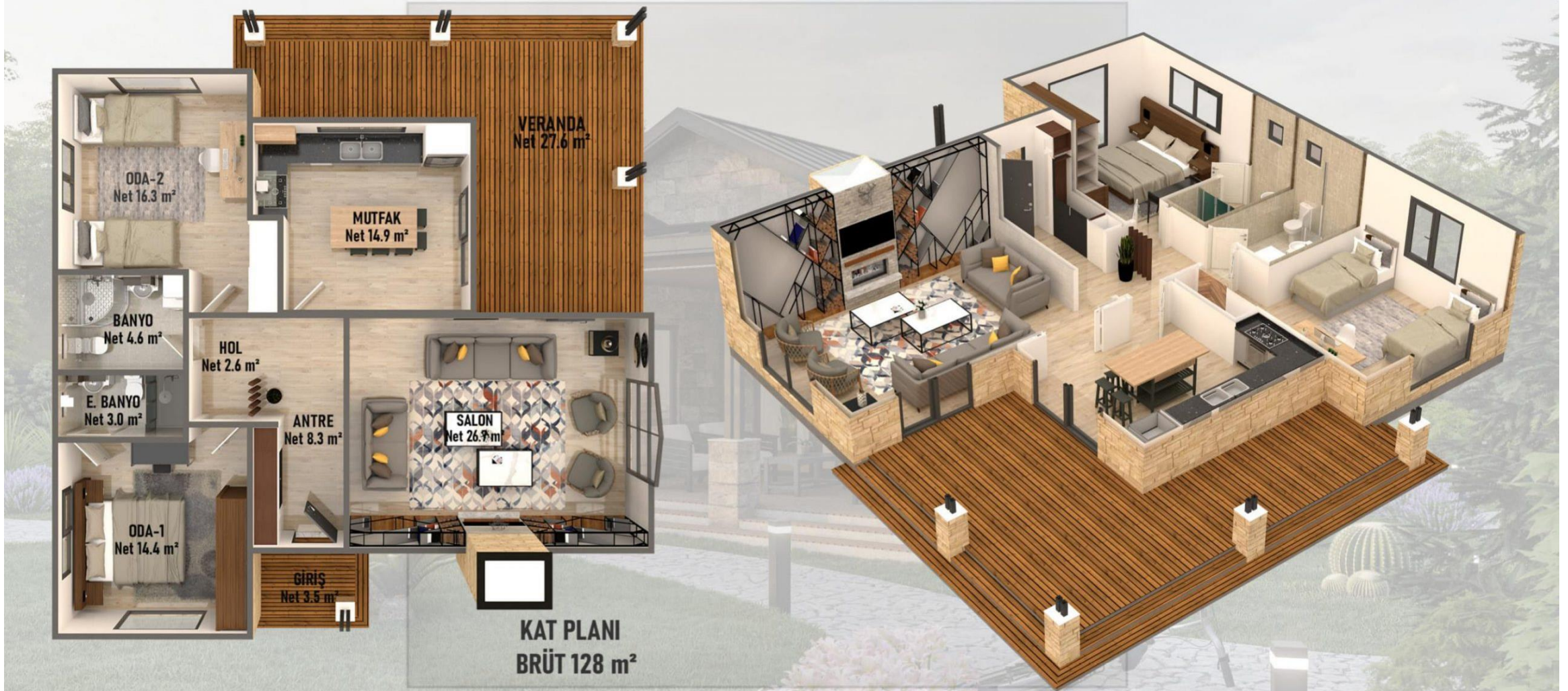


Class: Modern



انتقل إلى الإعدادات

Rock1 128 m²



Class: Modern

Penta 128 m²



Class: Modern

Penta 128 m²



Class: Modern

Split 130 m²



Class: Modern

Split 130 m²



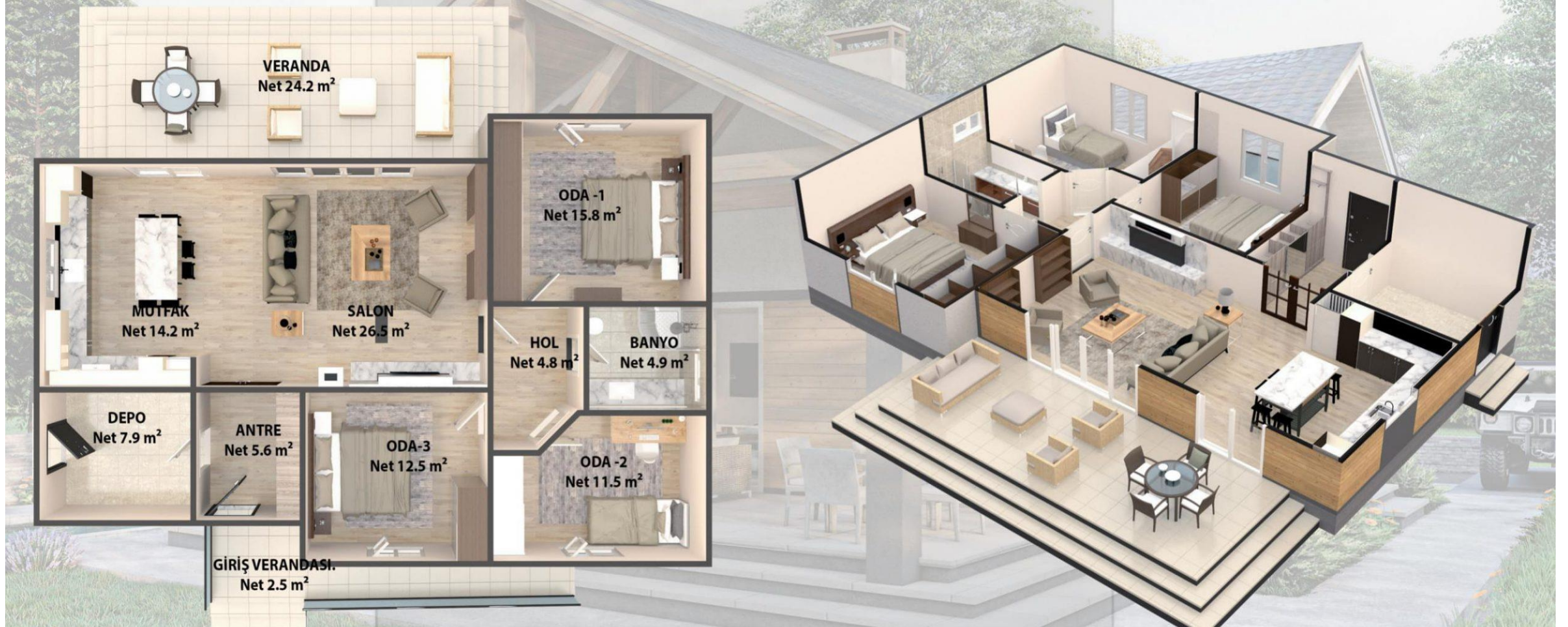
Class: Modern

Classi 142 m²



Class: Modern

Classi 142 m²



Class: Modern

Medrona 150 m²



Class: Modern

Medrona 150 m²



One Storey



Pyramid 157 m²



Class: Modern

Pyramid 157 m²



Class: Modern

Chem 165 m²



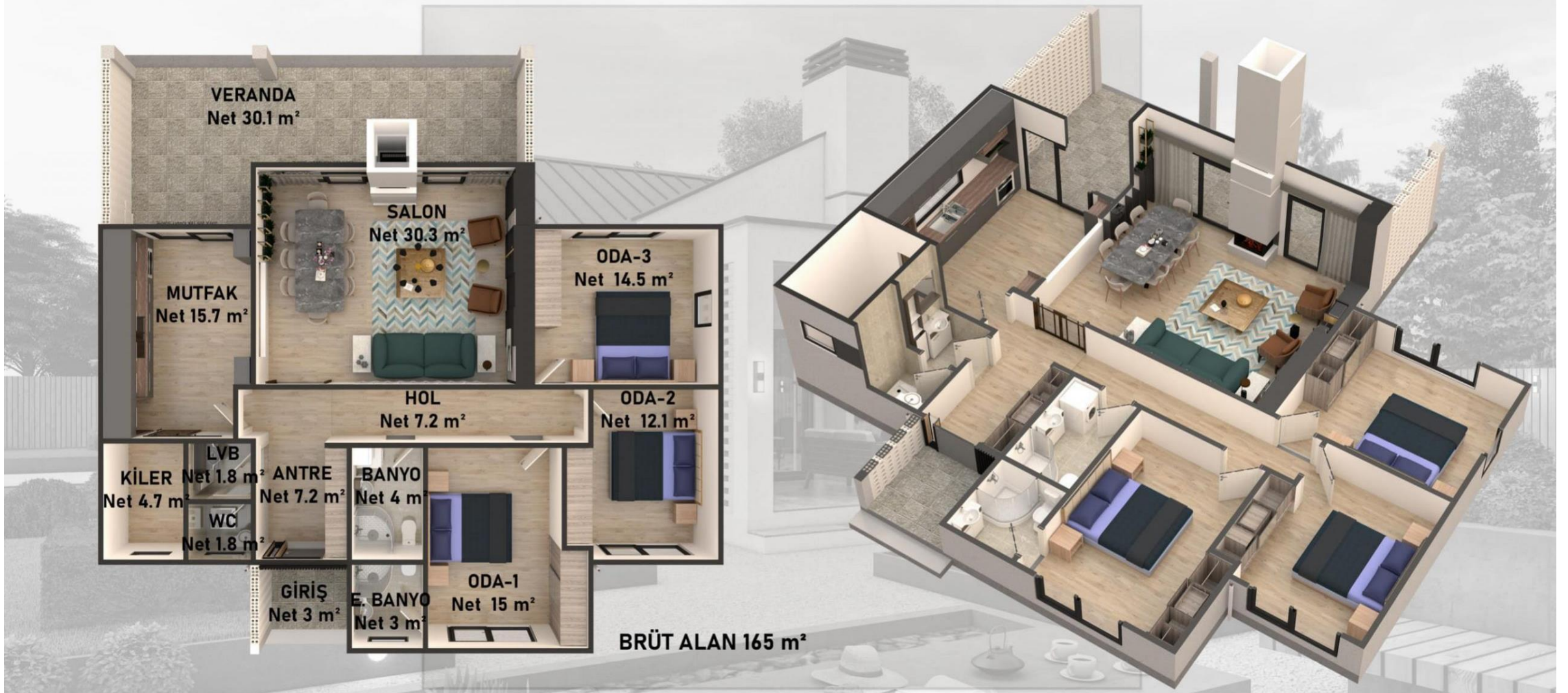
Class: Modern

Chem 165 m²



Class: Modern

Chem 165 m²



Class: Modern

Twin 175 m²



Class: Modern

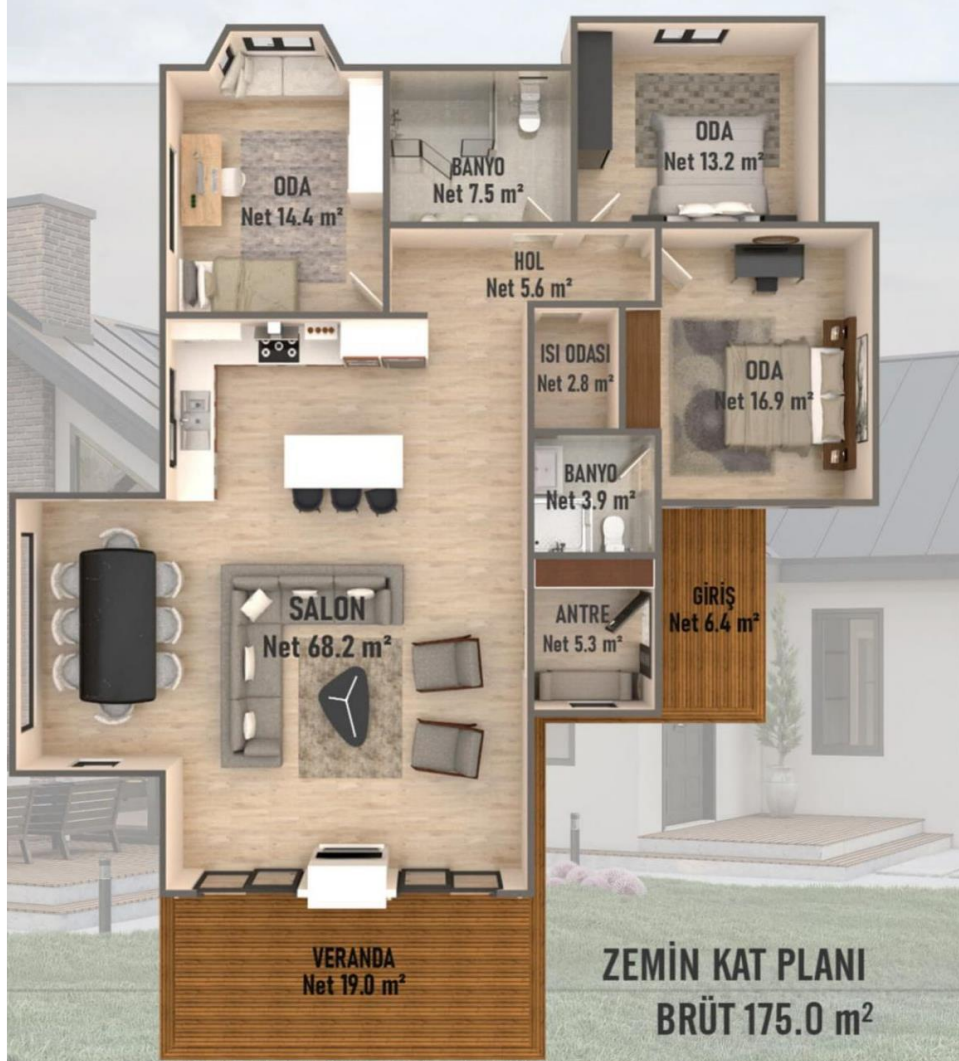
Twin 175 m²



Class: Modern



Twin 175 m²



Class: Modern

Artera 180 m²



Class: Modern

Artera 180 m²



One Storey



Gara 184 m²



Class: Modern

Gara 184 m²



Class: Modern

Layer 184 m²



Class: Modern

Layer 184 m²



Class: Modern

Layer 184 m²



Class: Modern

Tr1 184 m²



Class: Modern

Tr1 184 m²



Class: Modern



Tr1 184 m²



Class: Modern



Duplex Models

Modern Class

SM1 60 + 65 m²



Class: Modern

SM1 60 + 65 m²



Ground Floor



First Storey



WM1 80 + 60 m²



Class: Modern

WM1 80 + 60 m²



First Storey



Ground Floor

SM2 95 + 20m²



Class: Modern

SM2 95 + 20m²



First Storey



WM2 84 + 80 m²



Class: Modern

WM2 84 + 80 m²



Class: Modern



WM2 84 + 80 m²



Ground Floor



3 YATAK ODASI
1 BANYO
1 E.BANYO
BULUNMAKTADIR

ÜST KAT PLANI
BRÜT 80.4 m²



WM2 84 + 80 m²



First Storey



LUX 86+86 m²



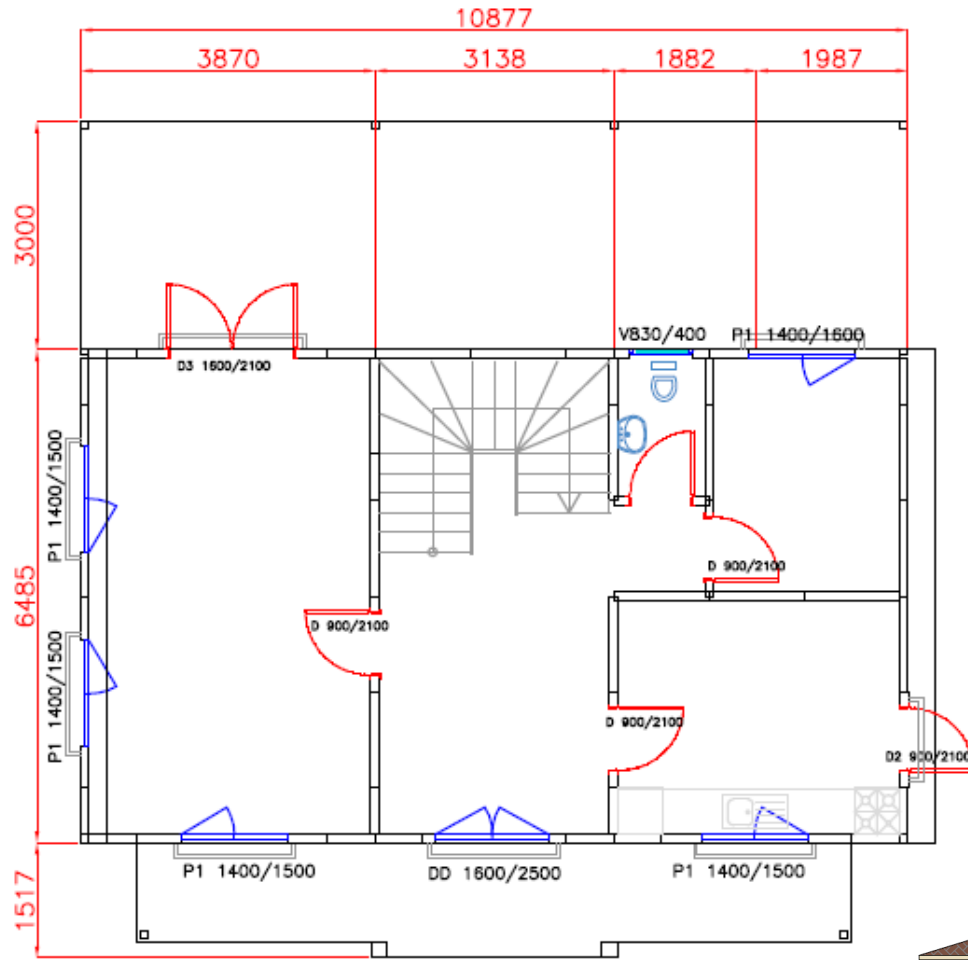
Class: Modern

LUX 86+86 m²

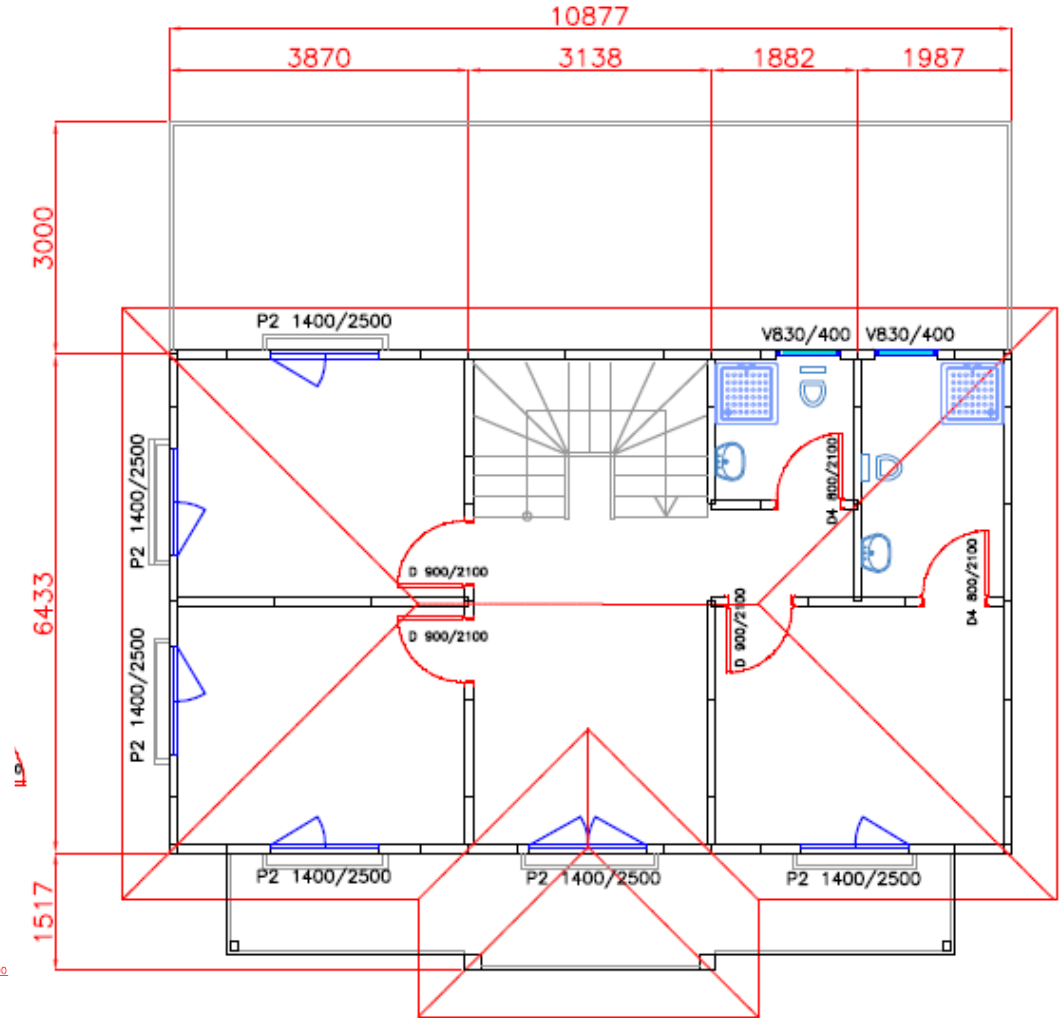


Class: Modern

LUX 86+86 m²



GROUND FLOOR PLAN : 71m² + 45m² veranda)



FIRST FLOOR PLAN : 71m²+45m² (Terrace)

SM3 95 + 58 m²



Class: Modern

SM3 95 + 58 m²

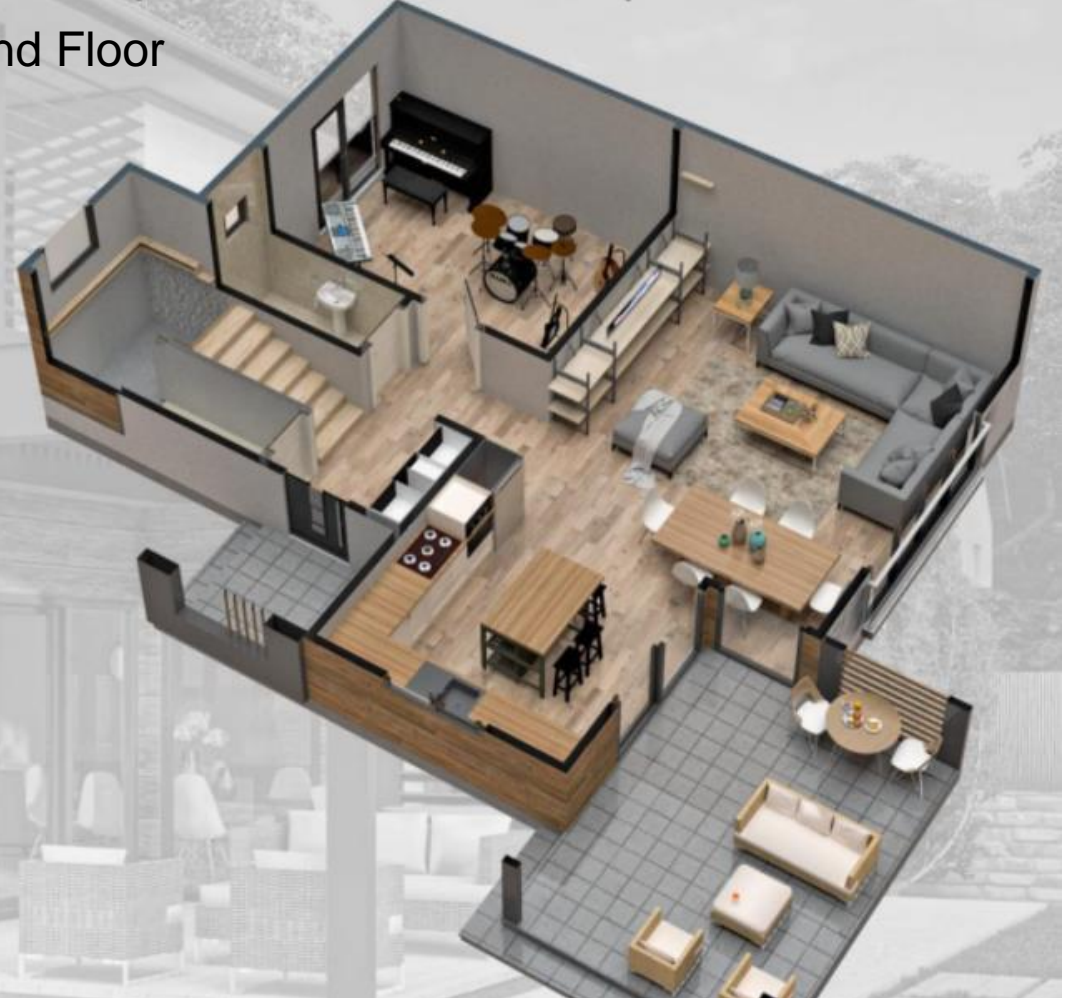


Class: Modern

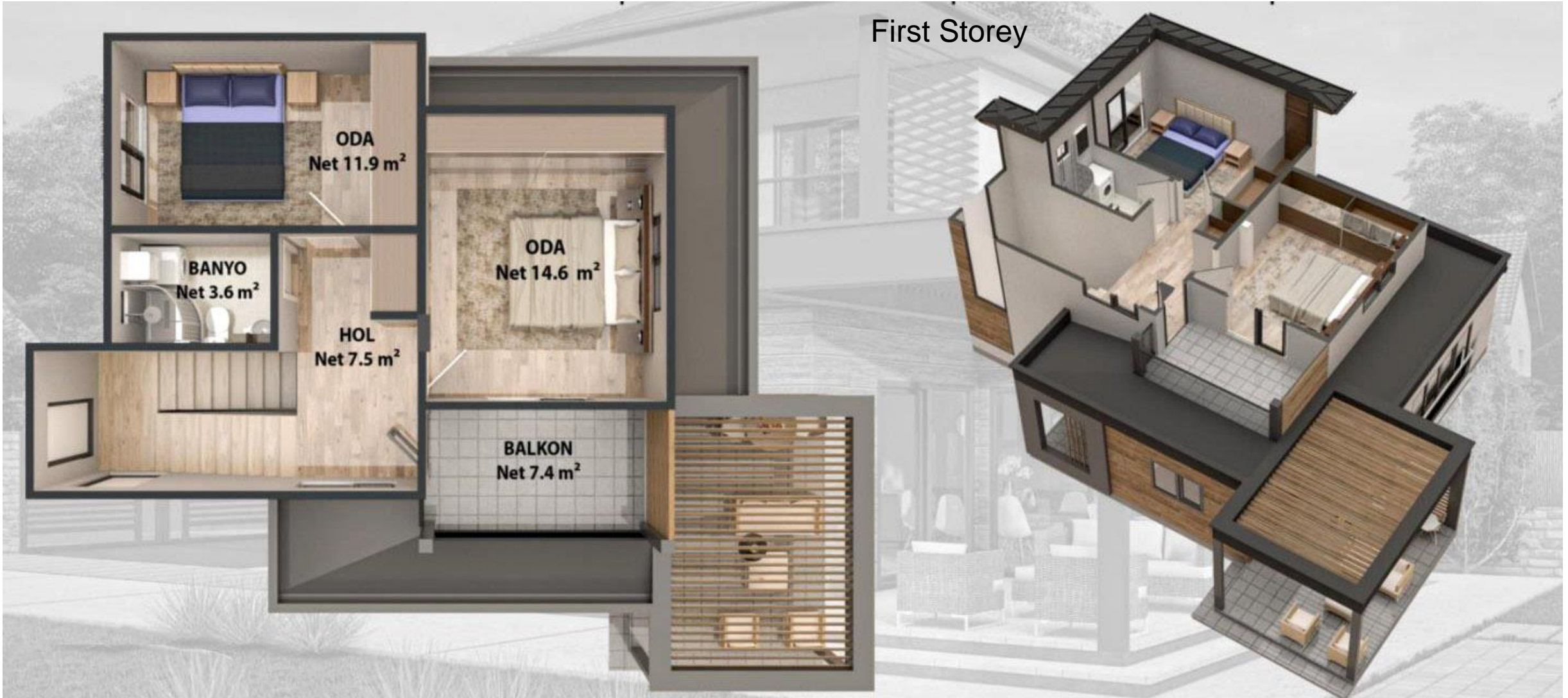
SM3 95 + 58 m²



Ground Floor



SM3 95 + 58 m²



RM1 103 + 75 m²



Class: Modern



RM1 103 + 75 m²



Class: Modern



RM1 103 + 75 m²



Ground Floor



ZEMİN KAT PLANI
BRÜT 103 m²



RM1 103 + 75 m²



Shown 104 + 96 m²



Class: Modern



Shown 104 + 96 m²



Class: Modern



Shown 104 + 96 m²



Ground Floor



ZEMİN KAT PLAN
96 M²



Shown 104 + 96 m²



First Storey



WM3 105 + 74 m²



Class: Modern



<https://facebook.com/Prefhouse>

WM3 105 + 74 m²



Ground Floor

ZEMİN KAT PLANI
BRÜT 105 m²

ANTRE
Net 2.5 m²

LVB
Net 1.5 m²

WC
Net 1.7 m²

SALON
Net 56 m²

TERAS
Net 18 m²

BALKON
Net 8.5 m²

WM3 105 + 74 m²



First Storey



-1. KAT PLANI
BRÜT 74 m²

SM4 116 + 36 m²



Class: Modern

SM4 116 + 36 m²



SM4 116 + 36 m²



Ground Floor



SM4 116 + 36 m²



RM2 116 + 84 m²



Class: Modern

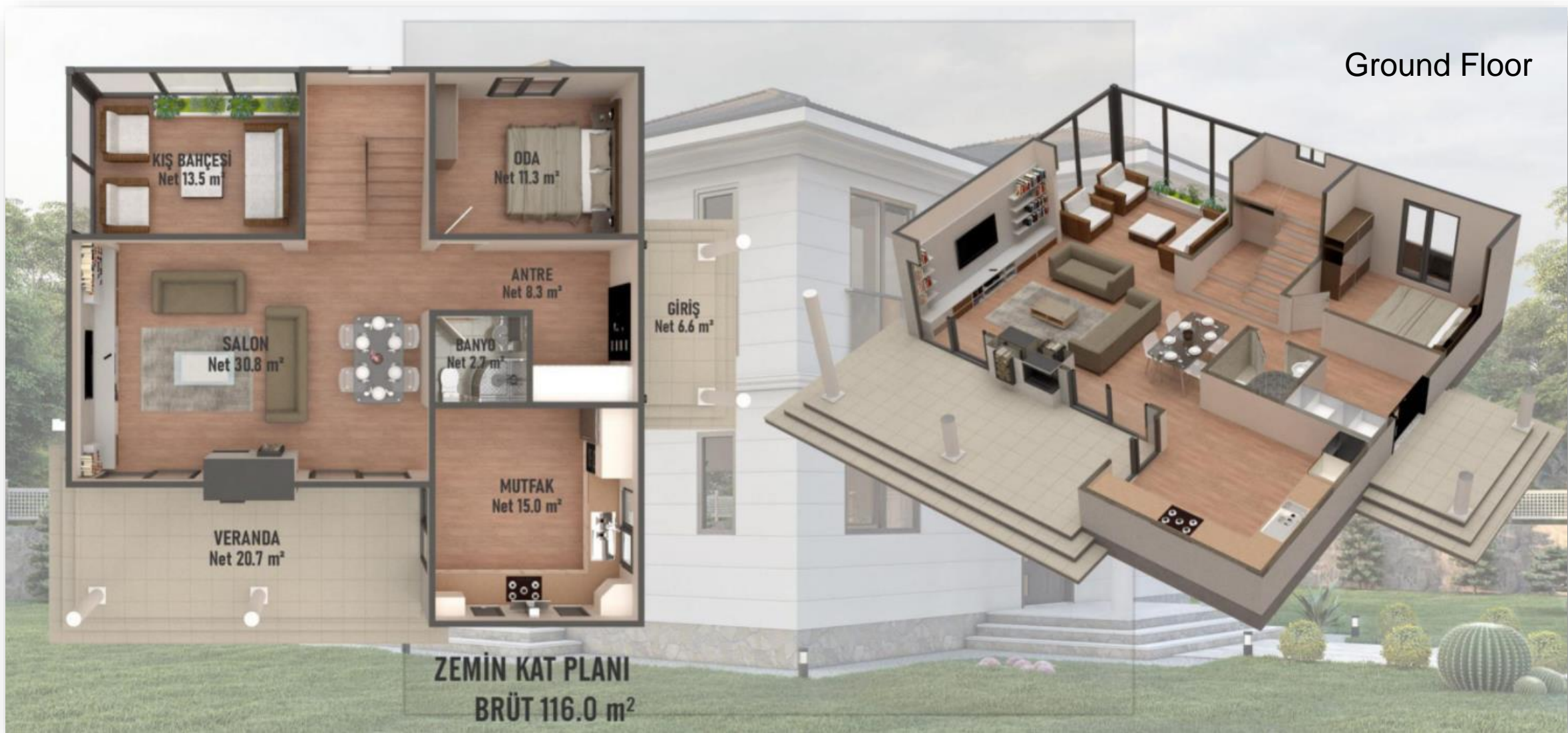
RM2 116 + 84 m²



Class: Modern



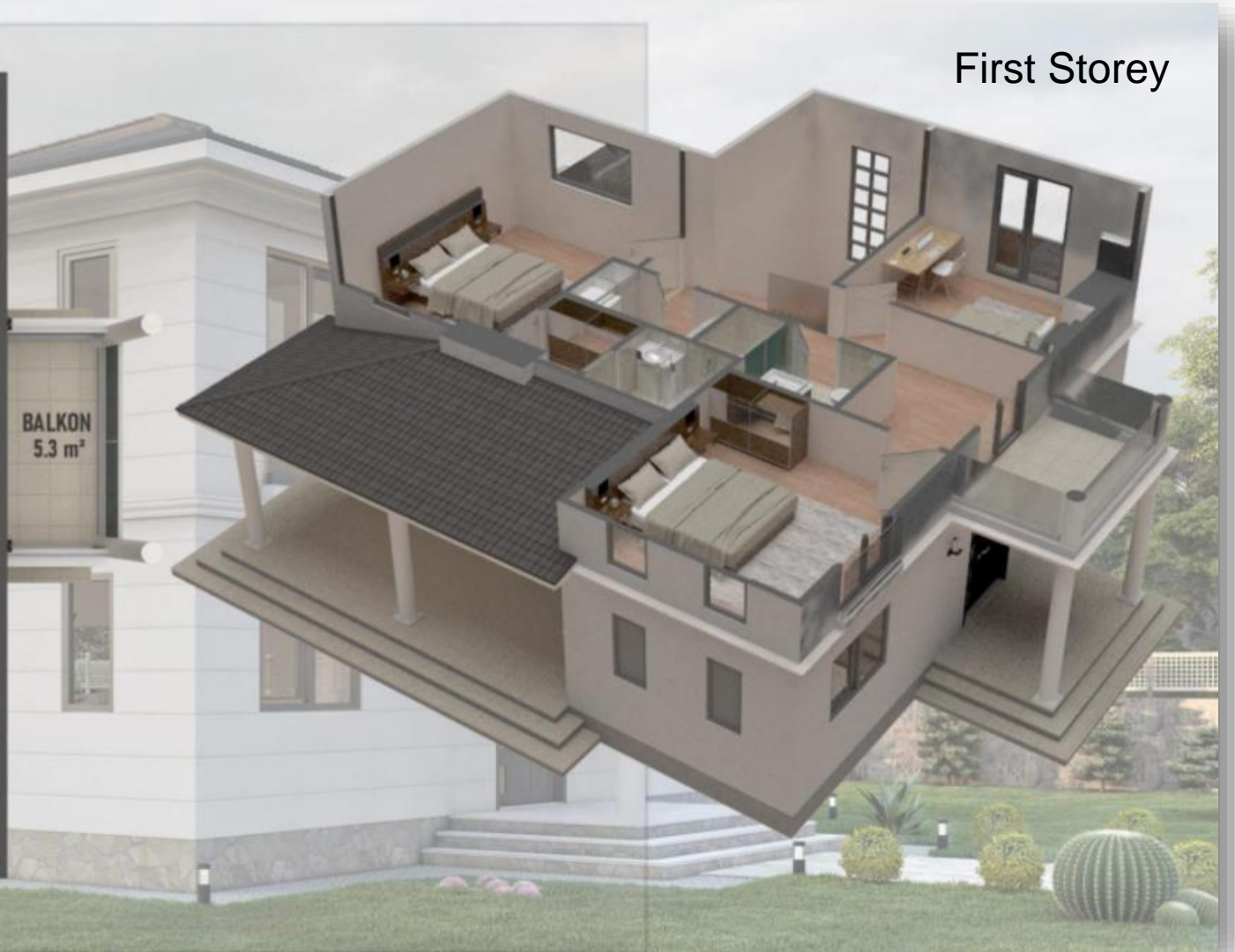
RM2 116 + 84 m²



RM2 116 + 84 m²



First Storey



RM3 117 + 73 m²



Class: Modern

RM3 117 + 73 m²



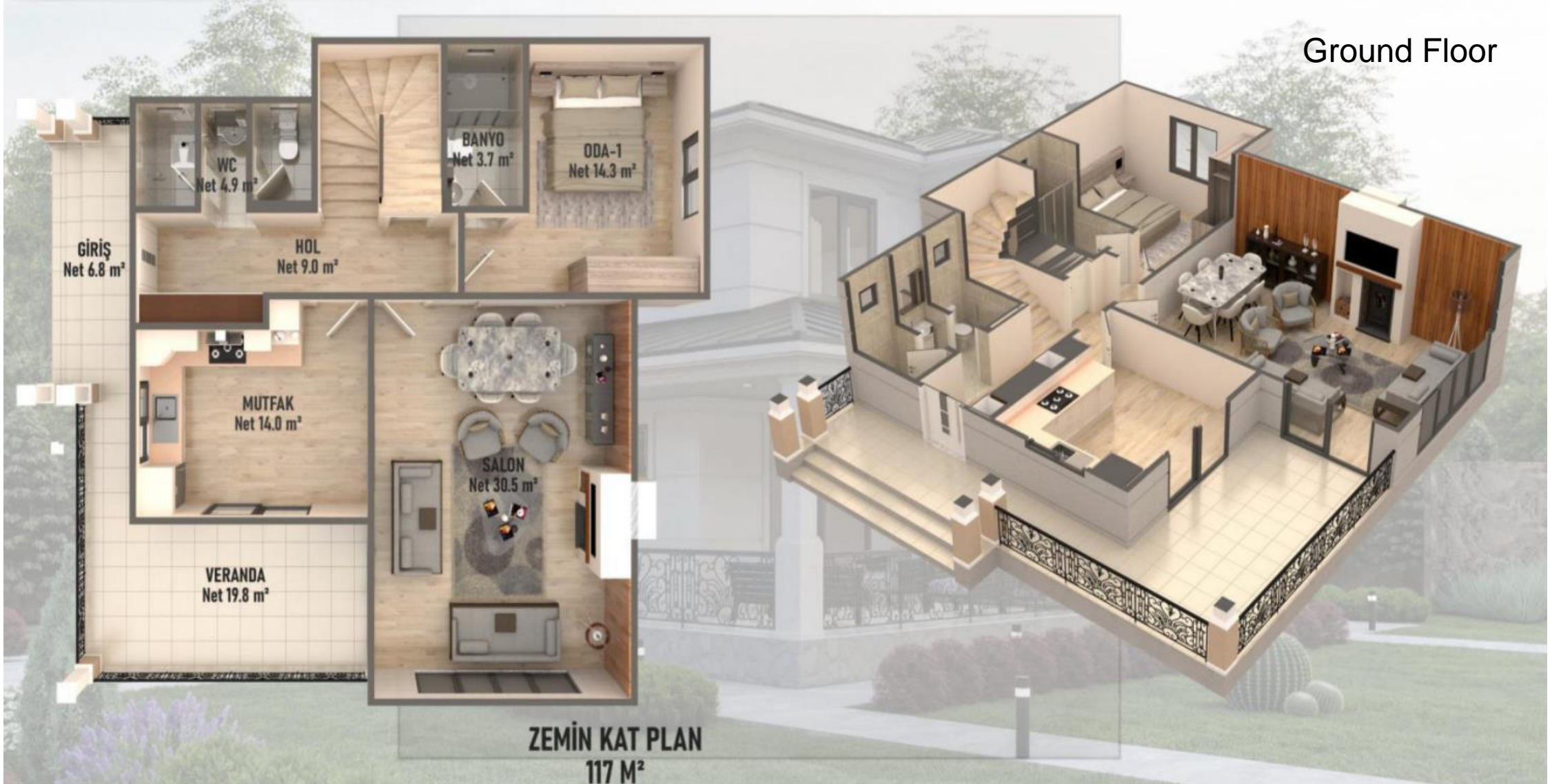
Class: Modern



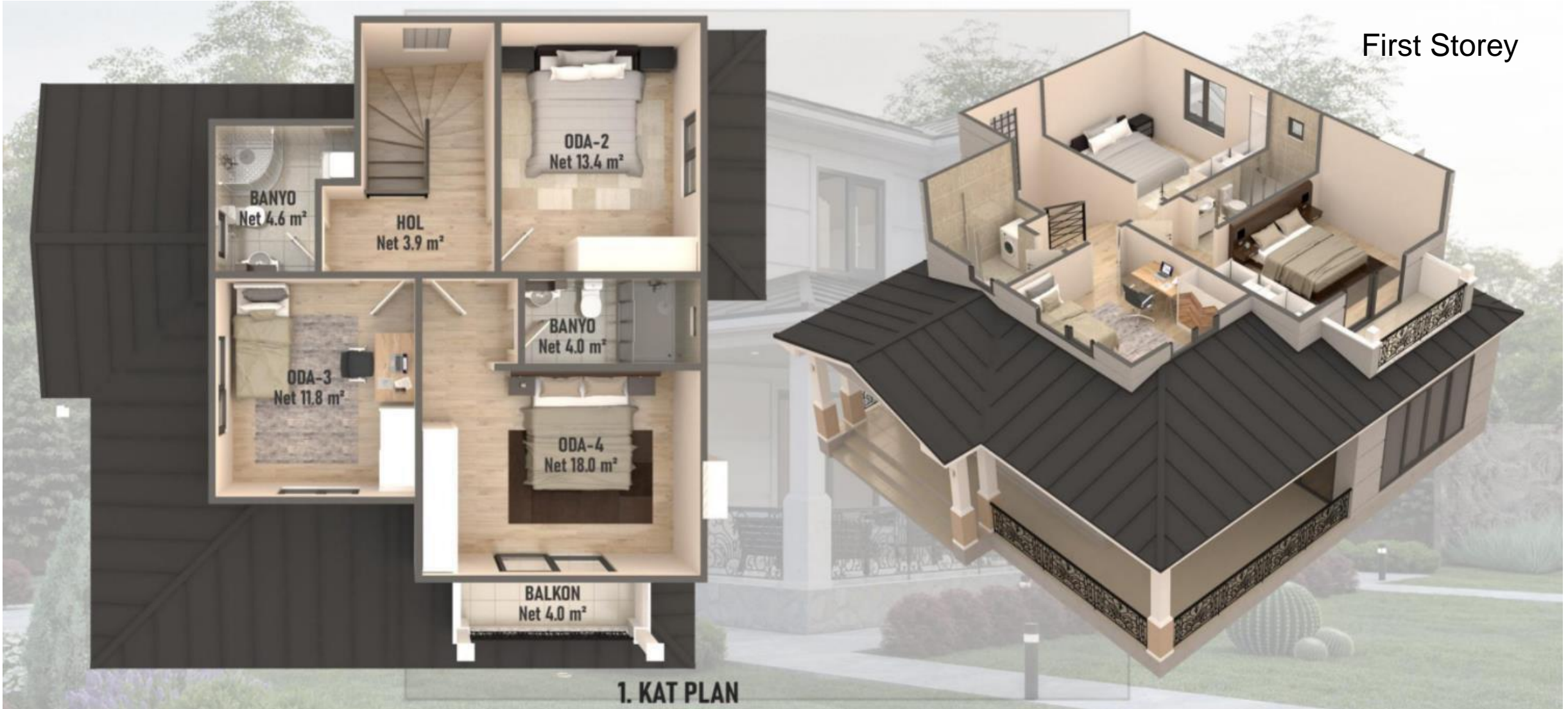
RM3 117 + 73 m²



Ground Floor



RM3 117 + 73 m²



RM4 129 + 50 m²



Class: Modern



RM4 129 + 50 m²



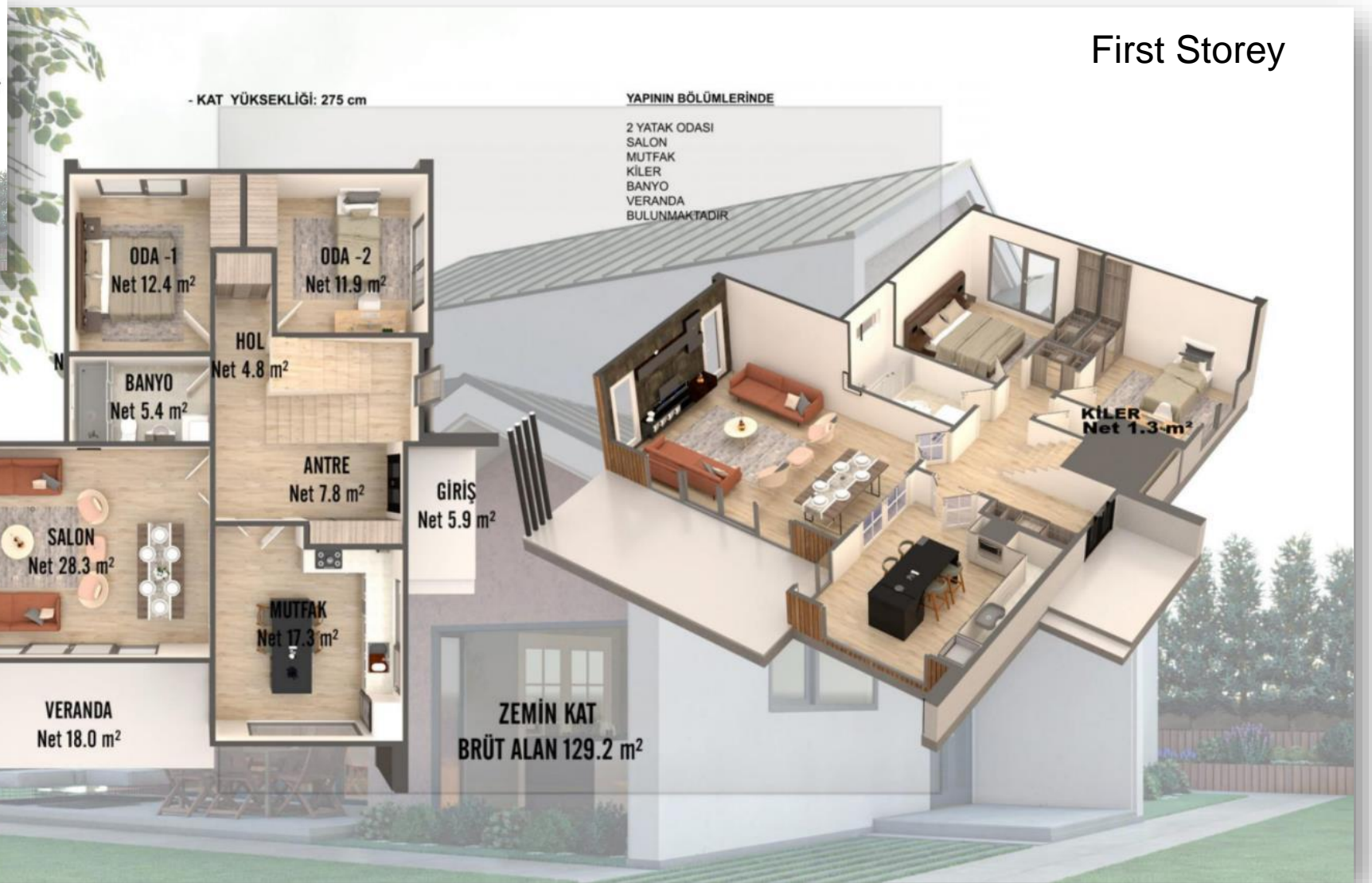
Class: Modern



RM4 129 + 50 m²



RM4 129 + 50 m²



First Storey

RM5 130 + 130 m²



Class: Modern



<https://facebook.com/Prefhouse>

RM5 130 + 130 m²



Class: Modern



RM5 130 + 130 m²



Ground Floor



RM5 130 + 130 m²



First Storey



1. KAT PLANI
BRÜT 130 m²

Cube 159 + 135 m²



Class: Modern



Cube 159 + 135 m²



Class: Modern



Cube 159 + 135 m²



325 cm dir
- ARAZİ 1500 m²dir

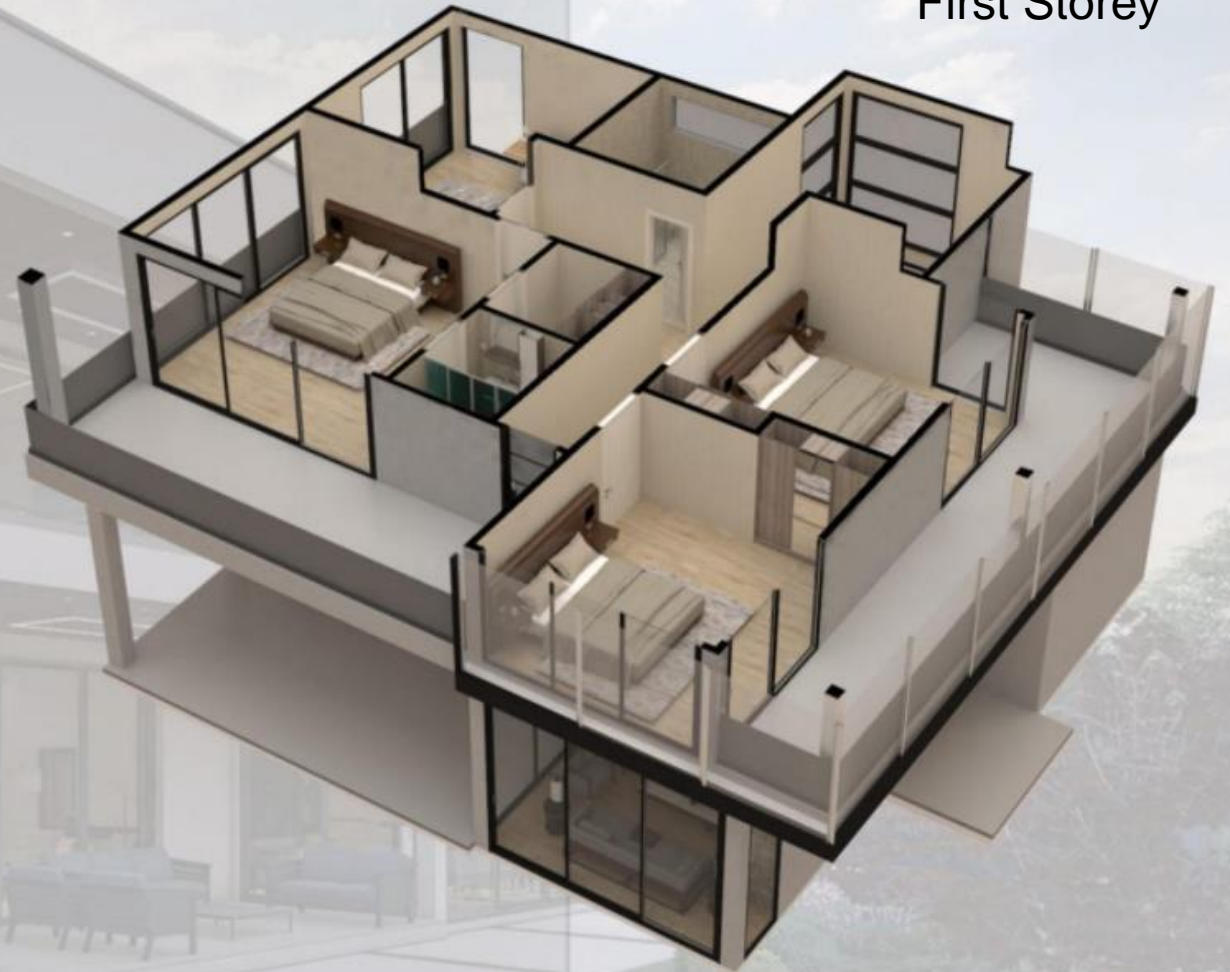
Ground Floor



Cube 159 + 135 m²



First Storey



2. KAT PLANI
BRÜT 159 m²

WM4 165 + 155 m²



Class: Modern

WM4 165 + 155 m²



Class: Modern

WM4 165 + 155 m²



Ground Floor



TOPLAM BRÜT ALAN
165.0 m²



WM4 165 + 155 m²



WM5 165 + 155 m²



Class: Modern

WM5 165 + 155 m²



Class: Modern



WM5 165 + 155 m²



WM5 165 + 155 m²



First Storey



BRÜT ALAN 122 m²

Marbella 200 m²



Class: Modern



Marbella 200 m²

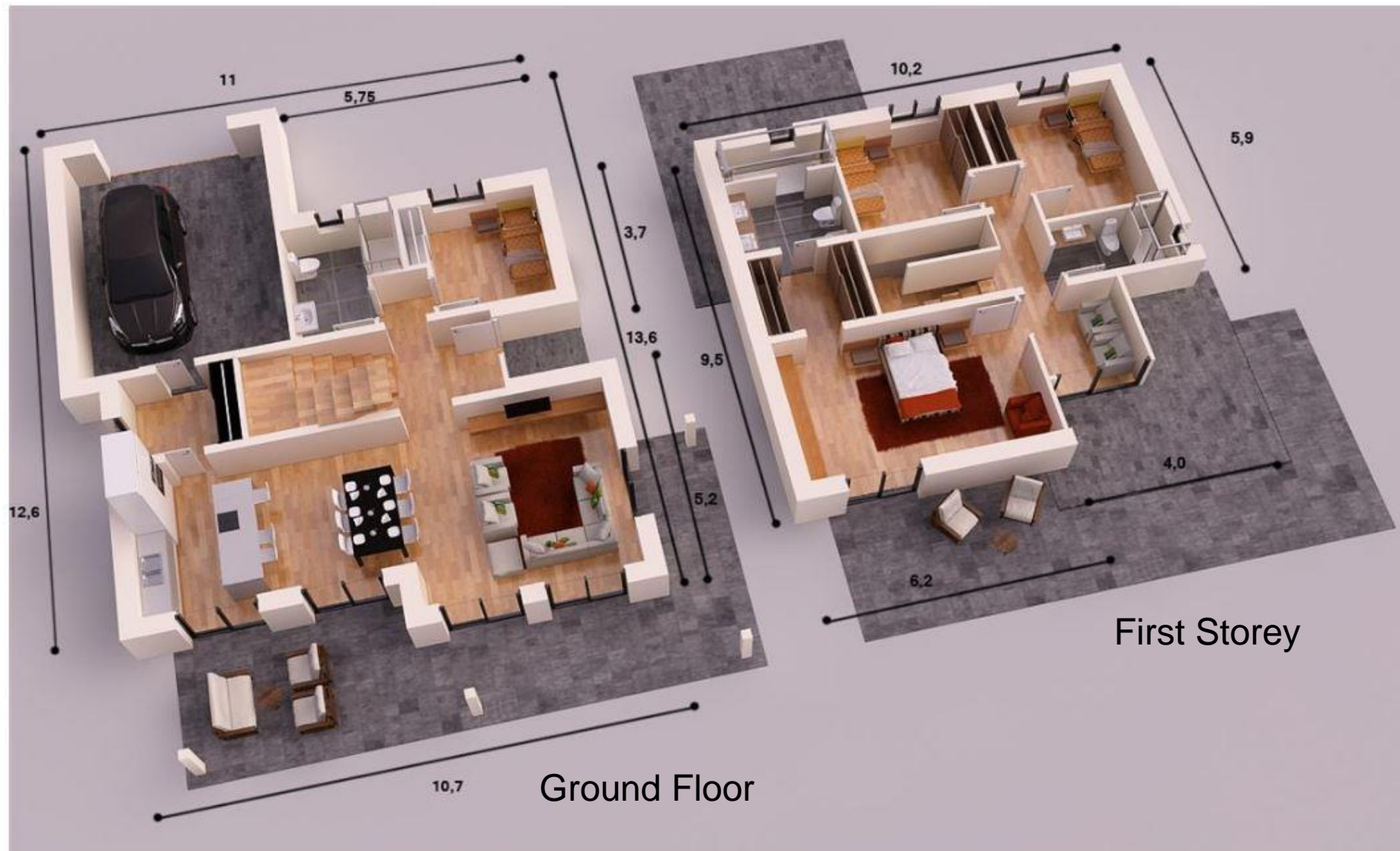


Alella 220 m²



Class: Modern

Alella 220 m²

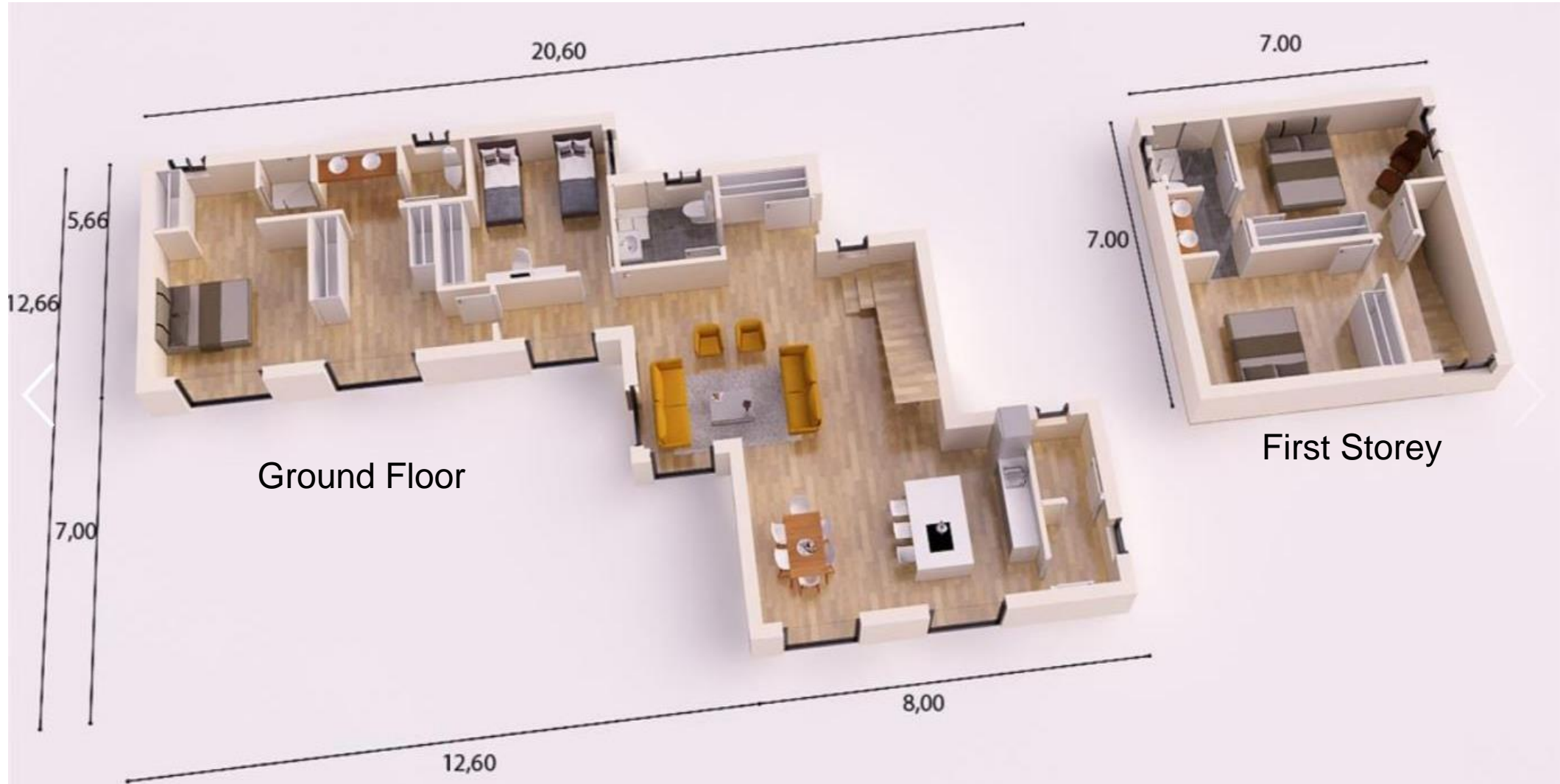


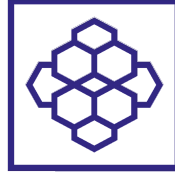
Madrid 220 m²



Class: Modern

Madrid 220 m²





مجموعة الراجحي القابضة
AL RAJHI GROUP HOLDING COMPANY

Steel Frame System
Luxury Models

فئة الهيكل المعدني
النماذج الفاخرة

AM SELA YAPI



Email: housing@alrajhigroup.sa

WhatsApp: +966 58 223 7930

Address :
Al Dukhail Building, Floor # 1
Al Malqa, Riyadh
Kingdom of Saudi Arabia



مجموعة الراجحي القابضة
AL RAJHI GROUP HOLDING COMPANY



مجموعة الراجحي القابضة

AL RAJHI GROUP HOLDING COMPANY